



COMPLETION EQUIPMENTS

Introduction

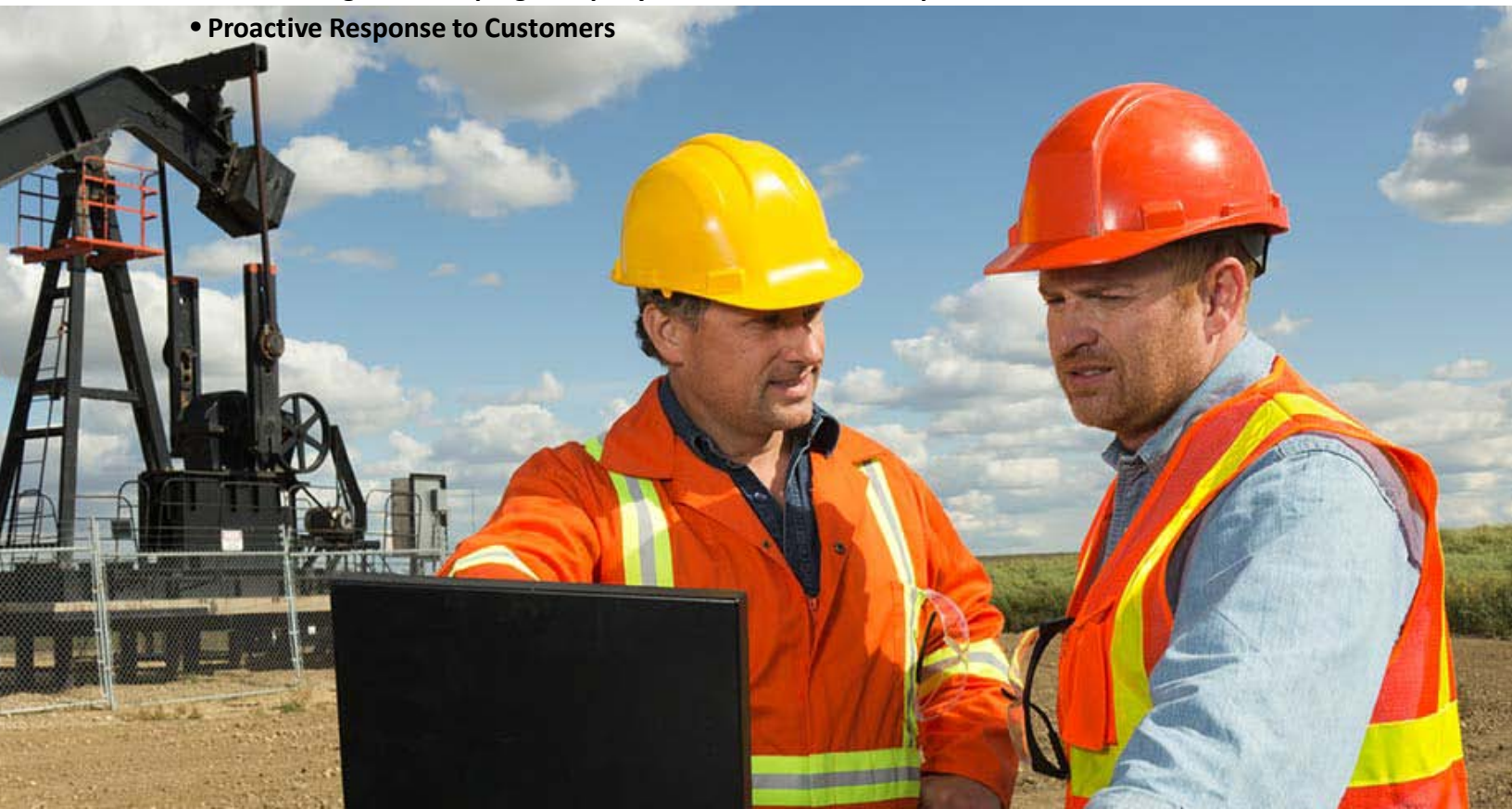
CPS is one of the leading certified company based in Vasai – Maharashtra. **CPS** is involved in manufacturing of Oil and Gas Equipments, with a state of art facility having the latest machineries to meet the quality standard of Oil and Gas industry.

Completion Equipments act as a barrier between the Surface and Reservoirs as they are heart of every completion. We at **CPS** understand the philosophy that any Loss of Production or Well Integrity can be saved with a proper selection of tool. With complete integrity, **CPS** has rights to manufacture Conventional Gas Lift Valve, Conventional Gas Lift Mandrel, Wireline Gas Lift Valve, Wireline Dummy Valve, Latches, Floating Equipments and centralizers to meet the demand of the global oil & gas market.

CPS has a well established testing facility includes TRO testing, Aging , hydro and shelf test to validate our products in different necessary aspects needed to fulfill the product requirements. We are in process for setting up flow loop facility, and High Temperature and High Pressure Testing cell to test our products in real environment.

We are focused on

- Quality of Products
- On time Delivery
- Fair Product Price
- Maintaining & Developing Company-Customer Relationship
- Proactive Response to Customers



Why us

- CPS has implemented Quality Management System compliance to API Spec Q1 9th Edition and has zeal to improve in all aspects to provide best products and services.
- CPS competitive thrust has been achieved by some stringent quality programs.
- CPS has installed quality checks coupled with the best testing facilities and have invested in the latest testing equipments.
- CPS has Innovative and well qualified passionate team to provide engineered solutions to all customer requirements.
- CPS has latest machineries and quality instruments to meet the manufacturing requirements along with desired quality .
- CPS has Testing unit to test and validate products to various API specification.

3



Product Range

- *MECHANICAL PACKER*
- *HYDRAULIC PACKER*
- *ANCHOR CATCHER*
- *DUAL BORE PACKER*
- *SLIDING SLEEVE*



PACKER

The packer forms the basis of the cased-hole completion design. The packer is a sealing device that isolates and contains produced fluids and pressures within the wellbore to protect the casing and other formations above or below the producing zone. This is essential to the basic functioning of most wells. The casing sizes in which CPS provides the packers are from size 4-1/2" to 9-5/8" with tubing connection from size 2-3/8" - 3-1/2".

5

There are two types of packer:

1. Permanent
2. Retrievable

Permanent packers can be removed from the wellbore only by milling. The retrievable packer may or may not be resettable, but removal from the wellbore normally does not require milling. Retrieval is usually accomplished by some form of tubing manipulation. This may necessitate rotation or require pulling tension on the tubing string. Both may be either mechanical type or hydraulic type.

MECHANICAL PACKER

This type of packers are set by some form of tubing movement, usually a rotation or upward /downward motion. We have supplied different sizes of packer to our worldwide customers.



HYDRAULIC PACKER

This type of packers are use fluid pressure to drive the cone behind the slips. Once set they remain set by the use of either entrapped pressure or a mechanical lock. They are released by picking up the tubing. They are good for used in deviated or crooked holes where tubing movement is restricted or unwanted. The tubing can be hung in neutral tension.

6



DUAL BORE PACKER

This is basically a “mid-string” isolation packer that is designed to seal off approximately two strings of tubing. The dual bore packer allows the simultaneous production of two zones while keeping them isolated. Most multiple-string packers are retrievable; however, some permanent models exist for use in HP/HT applications. Standard configurations have bidirectional slips to prevent movement and maintain packoff with the tubing landed in the neutral condition



ANCHOR CATCHER

Anchor Catcher is a Retrievable Double Grip Tubing Anchor designed to anchor the Tubing String in tension or compression. When installed with the proper amount of tubing tension, this anchor prevents movement of the Tubing String during rod pumping operations.

7

CASING					PRODUCT NUMBER	ANCHOR O.D.		ANCHOR I.D.		EUE THREAD		
O.D.	WEIGHT		I.D.			IN	MM	IN	MM			
IN/MM	LB/FT	KG/M	IN	MM						IN/MM		
4 1/2 114.3	13.50	20.1	3.920	99.6	20-033-0460	3.75	95.25	1.933	49.0	2 3/8 60.3		
	11.60	17.3	4.000	101.6								
	10.50	15.6	4.052	102.9								
	9.50	14.1	4.090	103.9								
5 127.0	18.00	26.8	4.276	108.6	20-033-0500	4.12	104.6					
	15.00	22.3	4.408	112.0								
	13.00	19.3	4.494	114.1								
	11.50	17.1	4.560	115.8								
5 1/2 139.7	26.00	38.7	4.548	115.5	20-033-0550	4.50	114.3	2.44	62.0	2 7/8 73.0		
	23.00	34.2	4.670	118.6								
	20.00	29.8	4.778	121.4								
	17.00	25.3	4.892	124.3	20-033-0560	4.62	117.3					
	15.50	13.1	4.950	125.7								
	14.00	20.8	5.012	127.3								
	13.00	19.3	5.044	128.1								
6 5/8 168.3	32.00	47.6	5.675	144.1	20-033-0650	5.50	139.7					
	28.00	41.7	5.791	147.1								
	24.00	35.7	5.921	150.4								
	20.00	29.8	6.049	153.6								
7 177.8	38.00	56.6	5.920	150.4	20-033-0700	5.88	149.4	2.44	62.0	2 7/8 73.0		
	35.00	52.1	6.004	152.5								
	32.00	47.6	6.094	154.8	20-033-0710							
	29.00	43.2	6.184	157.1								
	26.00	38.7	6.276	159.4	20-033-0720							
	23.00	34.2	6.366	161.7								
	20.00	29.8	6.456	164.0								
	17.00	25.3	6.538	166.1								

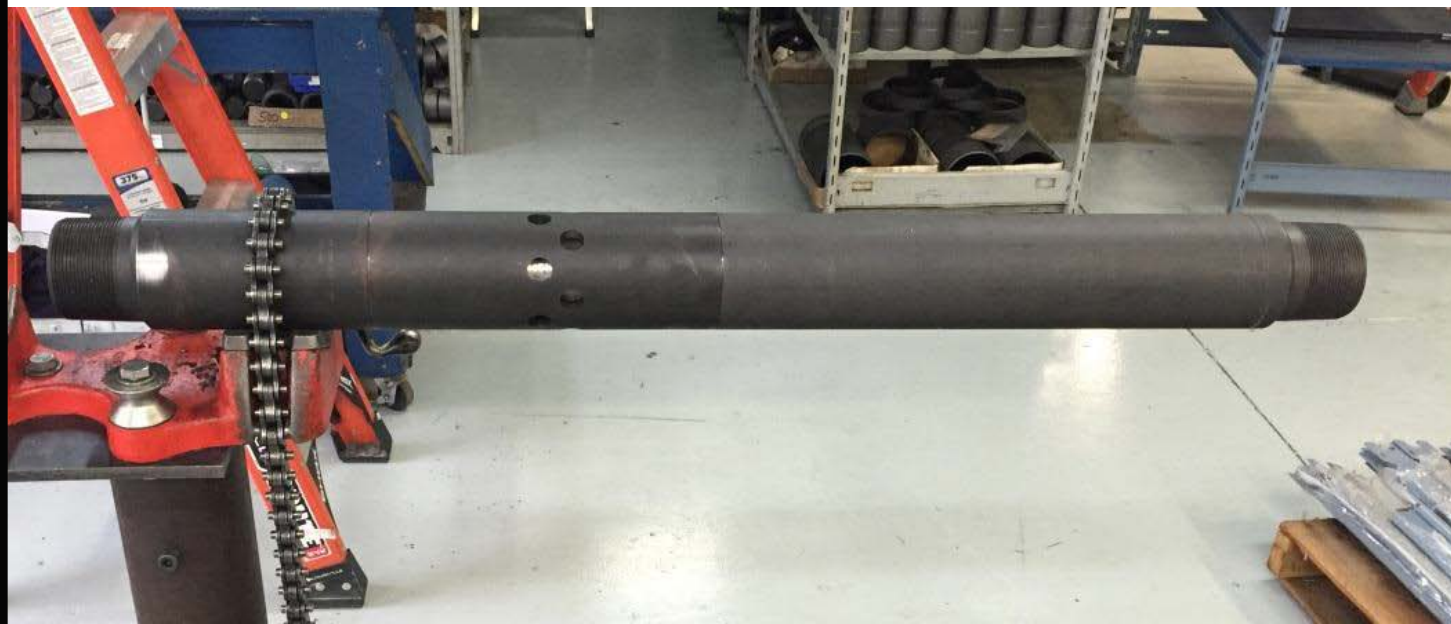


SLIDING SLEEVE

A completion device that can be operated to provide a flow path between the production conduit and the annulus. Sliding sleeves incorporate a system of ports that can be opened or closed by a sliding component that is generally controlled and operated by slickline tool string.

8

TUBING SIZE		SEAL BORE I.D.		FLOW AREA		LENGTH		STANDARD O.D.	
IN	MM	IN	MM	IN ²	CM ²	IN	MM	IN	MM
1.900	48	1.43	36	1.893	12.21	10.5	266.7	2.109	53.57
		1.50	38						
2 1/16	52	1.56	39	1.893	12.21	10.7	271.8	2.250	57.15
		1.62	41						
2 3/8	60	1.78	45	2.839	18.32	11.3	287.0	2.560	65.02
		1.81	46						
		1.87	47						
2 7/8	73	2.25	57	4.138	26.70	13.1	332.7	3.109	78.97
		2.31	58						
3 1/2	89	2.75	69	6.106	39.40	14.3	363.2	3.687	93.65
		2.81	71						



For any further query please contact us on



**REGD. OFFICE -. 23-28 , PHASE V, PARMAR TECHNO CENTRE, WESTERN EXPRESS HIGHWAY ,
VASAI EAST, THANE DIST., MAHARASHTRA, INDIA-401208**



EMAIL : - SALES@CPSOG.COM